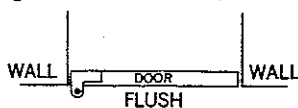
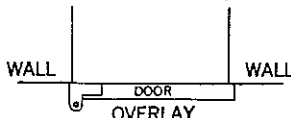


Directions For Installing No. 340 **STANLEY** PIVOT HINGE

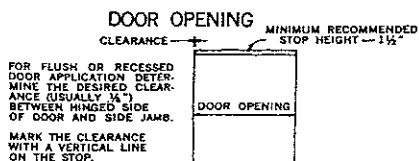
1

The Stanley No. 340 Pivot Hinge can be used for flush, recessed, or overlay type installations.



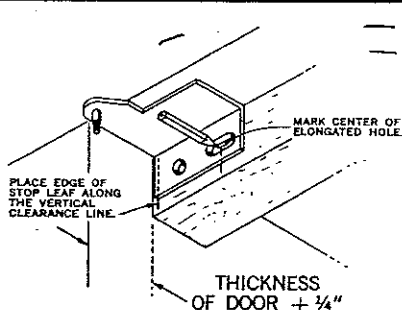
The instructions given below are for a flush installation using a right handed No. 340 Pivot Hinge. Left hand installation is opposite.

2

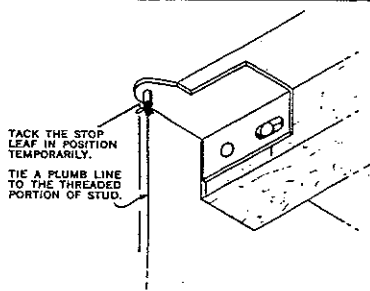


Plywood block at hinge only, to accommodate floor leaf. Block thickness must be $\frac{3}{4}$ " minimum to accommodate screws if applied over other than wood flooring. Thickness of block should be determined by thickness of carpet or other floor covering and clearance desired. Height of door opening from top of plywood block to top of stop — assuming mortised hinges, door leaves only — equals door height plus $\frac{3}{4}$ ". For non-mortised hinges door opening height equals door height plus $\frac{3}{4}$ " from same two points.

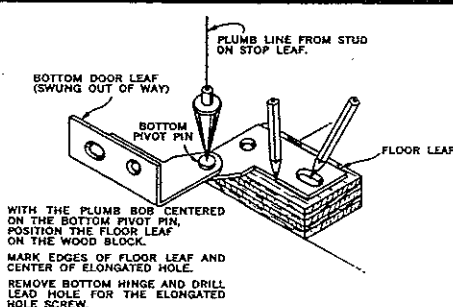
3



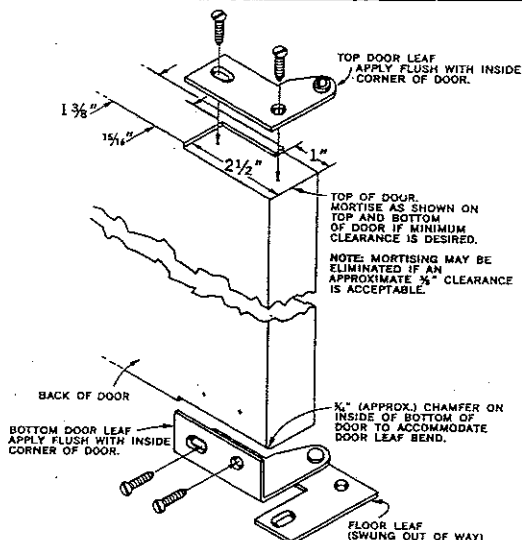
4



5

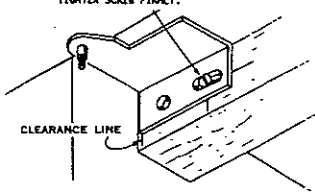


6



7

DRILL LEAD HOLE IN CENTER OF ELONGATED HOLE PREVIOUSLY MARKED AND ATTACH STOP LEAF WITH A SCREW IN THE ELONGATED HOLE ONLY DO NOT TIGHTEN SCREW FULLY.



8



WITH THE TOP AND BOTTOM DOOR LEAVES ATTACHED AND THE DOOR IN OPEN POSITION, FIT THE DOOR IN THE OPENING AS FOLLOWS:
INSERT THE TOP DOOR LEAF ON THE PIVOT PIN OF THE STOP LEAF.
SLIDE THE BOTTOM CORNER OF DOOR ON TO THE WOOD BLOCK.

9

POSITION FLOOR LEAF ON THE MARKINGS PREVIOUSLY DRAWN ON WOOD BLOCK. APPLY A SCREW THRU THE ELONGATED HOLE ONLY. DO NOT TIGHTEN FULLY.
MAKE FINAL DOOR ALIGNMENT IF NECESSARY, BY TAPPING THE LEAVES THAT HAVE ELONGATED HOLES.
APPLY REMAINING SCREWS. TIGHTEN ALL SCREWS, AND APPLY CYLINDRICAL SAFETY LOCK NUT TO COMPLETE THE INSTALLATION.
CAUTION: SAFETY NUT MUST BEAT ON THREADED PORTION OF PIVOT TO INSURE SECURE INSTALLATION. THE NUT MUST NOT TOUCH THE TOP DOOR LEAF.

